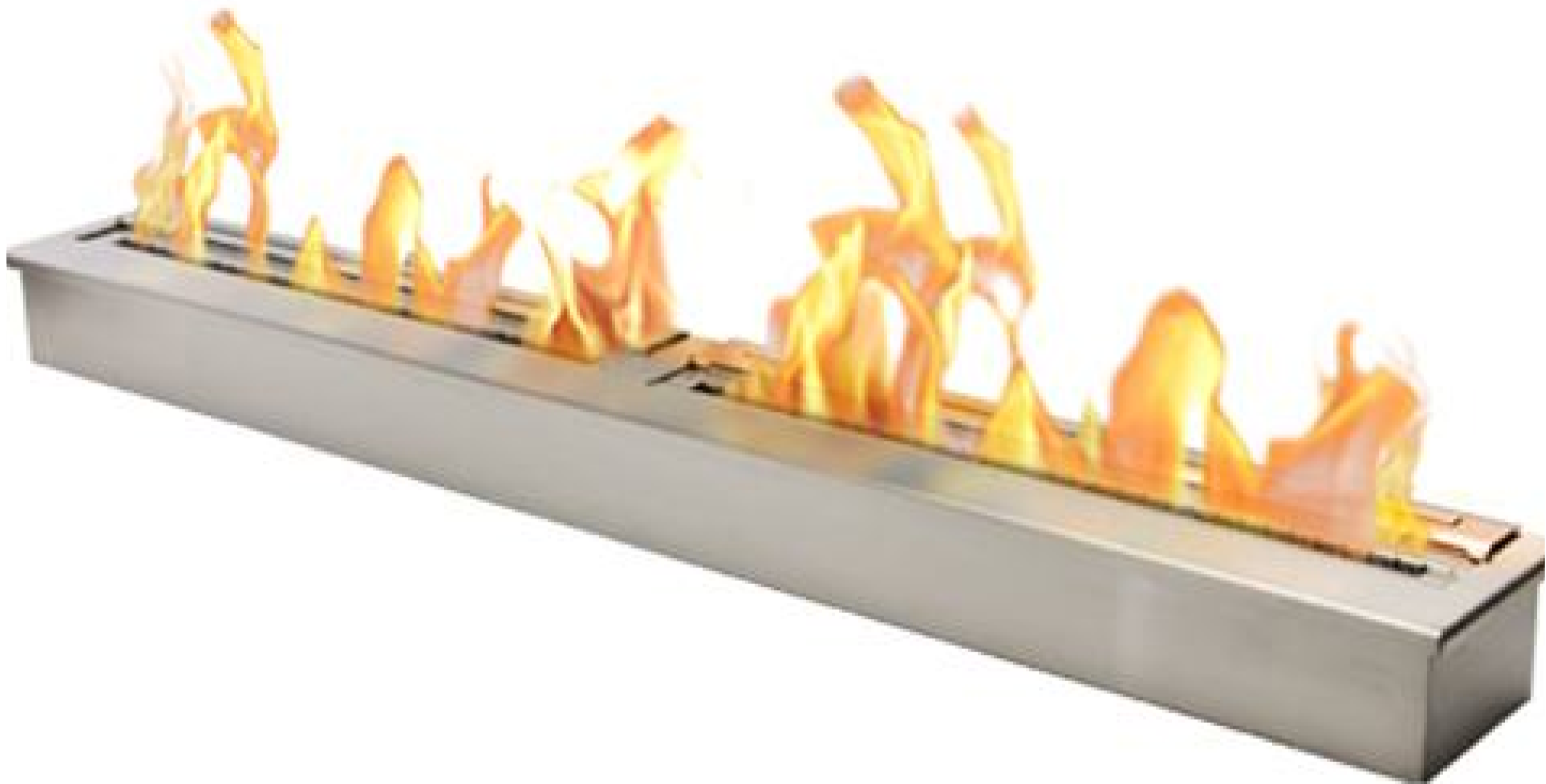


# Burner Collection

## 60" Burner



**Black**



### Included Accessories



**Lighting Rod**



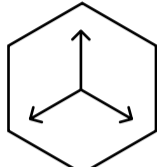
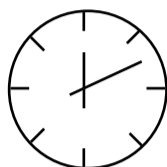
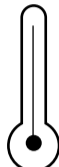
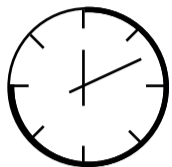
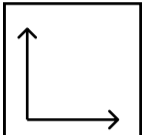
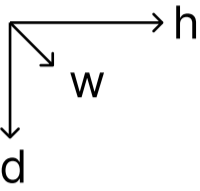
**Lighter**



**Funnel**

# Burner Collection

## 60" Burner



Dimensions H x W x D mm/in	Fuel Capacity	Heats on Average (indoors)	Fuel Consumption	Thermal Output Net (MAX)	Approx. Burn Time	Minimum Room Size (per burner)
115.2×1524×193 4.54"× 60"×7.6"	18L	100-120m <sup>2</sup>	0.56L per hour	4000 BTU 11.7Kw/h	10 hours	100m <sup>2</sup>

### Awards

2010 Winner Outdoor Hearth Products  
Vesta Awards

### Application

Indoor & Outdoor

### Burner Colour



Stainless Steel



Black

### Materials

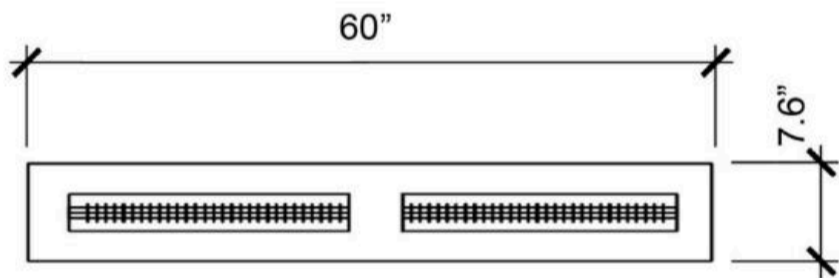
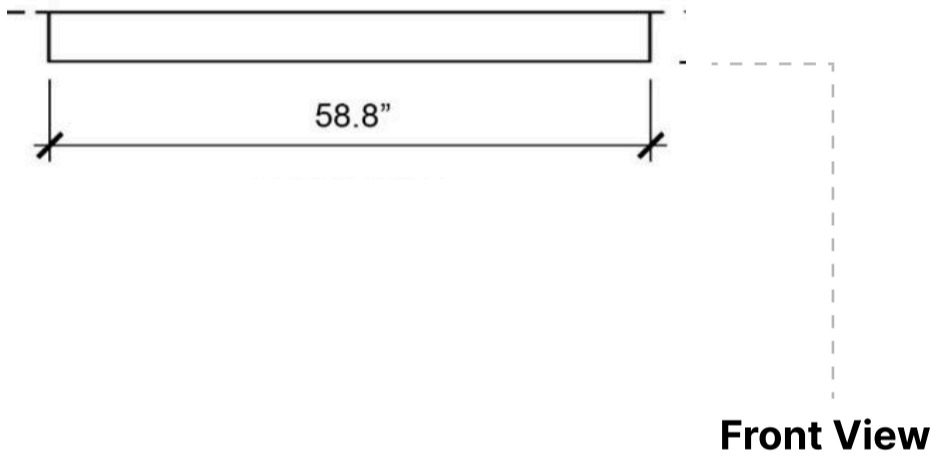
Grade 304 Stainless Steel Construction

### Approx. Weight

66 lbs

### Fuel Type

Bio Ethanol Fuel



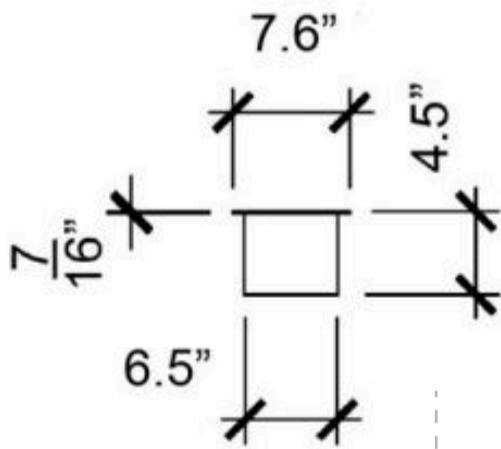
#### Inserting within a firebox setting:

The Bio Flame 60" BURNER can only be fitted into a non-combustible firebox that has minimum clearances of 68"W x 24"H x 16"D.

#### Custom made fireboxes must:

- Be made out of a non-combustible material such as stainless steel
- \*When recessing the tray into a non-combustible base with no firebox, the overhead clearance required is 60"MIN. to the nearest combustible\*

Top View



Side View



Lifetime Warranty

FOR MORE INFORMATION PLEASE REFERENCE THE CLEARANCE & INSTALLATION MANUAL

\*Dimensions may vary by 2% (plus or minus) due to material attributes. Template not provided. The Bio Flame recommends using the actual fireplace or burner model when making final cut out

